

BLM LIBRARY



88054478



# KEMMERER

# Maps

## Resource Management Plan Draft Environmental Impact Statement

QH  
76.5  
.WB  
K455  
1985  
v.2



**DRAFT**

**RESOURCE MANAGEMENT PLAN/  
ENVIRONMENTAL IMPACT STATEMENT  
FOR THE KEMMERER RESOURCE AREA**

**Lincoln, Sublette, Sweetwater, and Uinta Counties, Wyoming**

**Lead Agency:** Bureau of Land Management, U.S. Department of the Interior

**Type of Action:** Administrative

**Abstract:**

This draft Resource Management Plan and Environmental Impact Statement addresses alternatives for managing approximately 1.6 million surface acres administered by the Kemmerer Resource Area of the Bureau of Land Management. The alternatives focus primarily on resolving nine planning issues.

Six alternatives were examined in detail. Each of the six provides a different emphasis for managing the resource area and each resolves the nine planning issues.

When this document is produced in final form, it will provide a comprehensive framework for managing and allocating resources in the Kemmerer Resource Area during the next 20 years, or longer.

Further information regarding this document can be obtained from the address below. Comments, which will be accepted until July 12, 1985, will be addressed to:

Alan Stein, Team Leader  
Rock Springs District Office  
Bureau of Land Management  
P.O. Box 1869  
Rock Springs, Wyoming 82902-1869  
Telephone (307) 382-5350

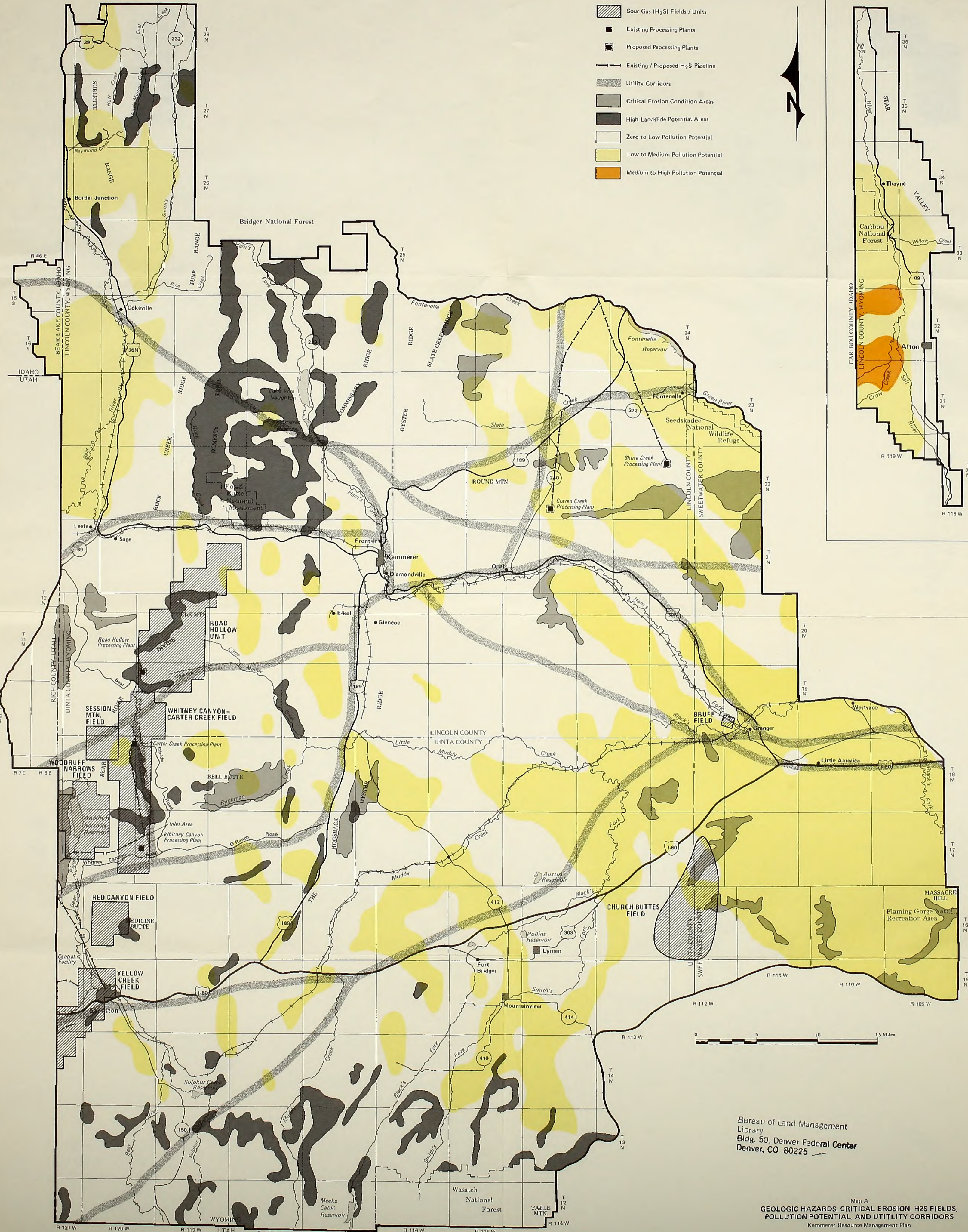
87

88054478

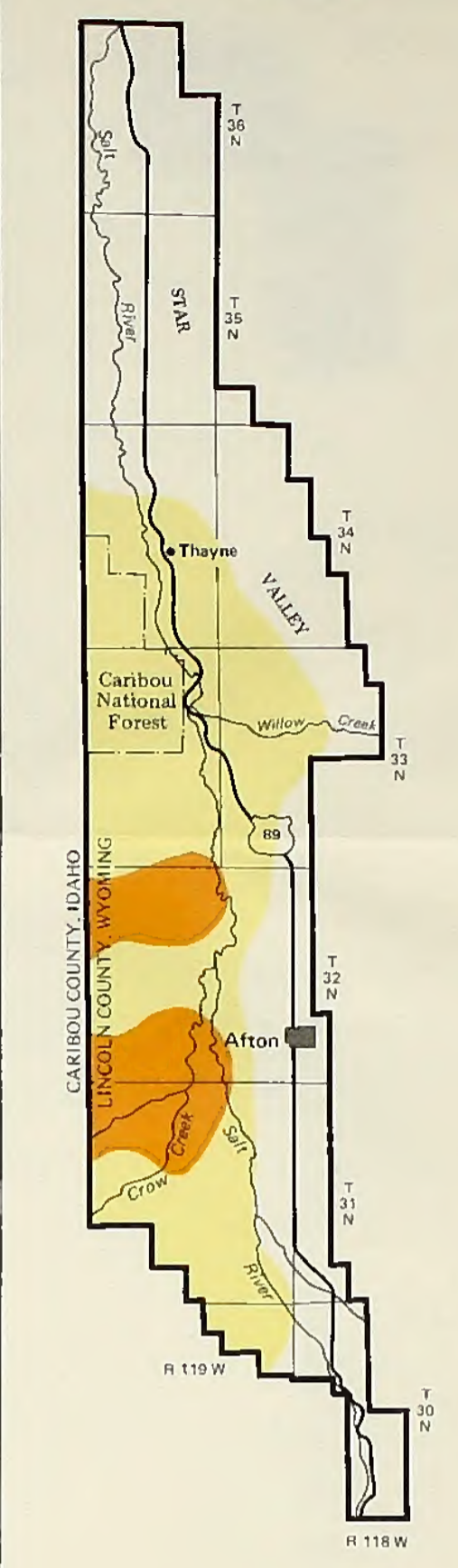
Q#  
76.5  
-68  
K455  
1985  
v. 2

Bureau of Land Management  
Library  
Bldg. 50, Denver Federal Center  
Denver, CO 80225





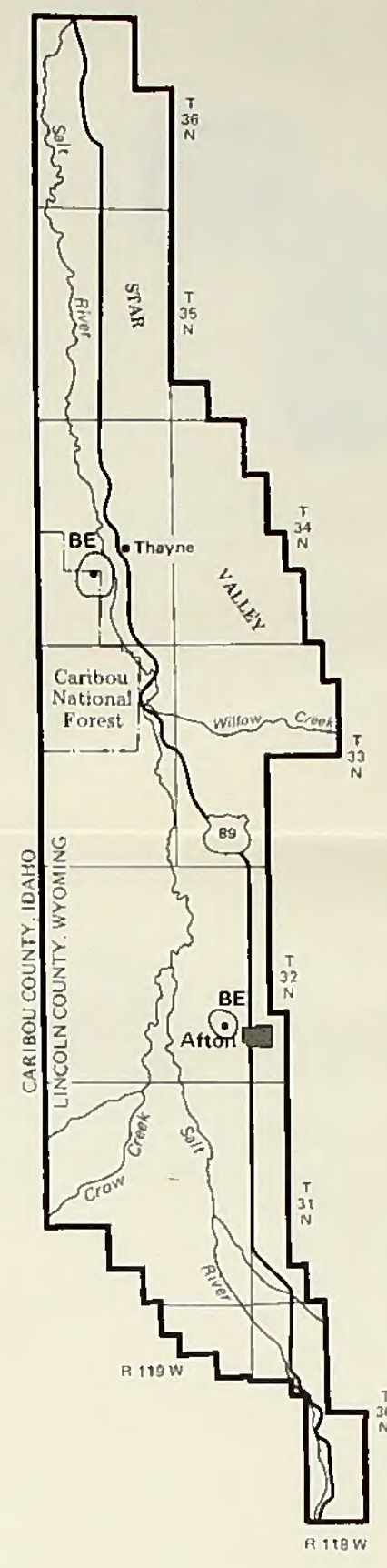
- Sour Gas (H<sub>2</sub>S) Fields / Units
- Existing Processing Plants
- Proposed Processing Plants
- Existing / Proposed H<sub>2</sub>S Pipeline
- Utility Corridors
- Critical Erosion Condition Areas
- High Landslide Potential Areas
- Zero to Low Pollution Potential
- Low to Medium Pollution Potential
- Medium to High Pollution Potential



Bureau of Land Management  
 Library  
 Bldg. 50, Denver Federal Center  
 Denver, CO 80225

Map A  
 GEOLOGIC HAZARDS, CRITICAL EROSION, H<sub>2</sub>S FIELDS,  
 POLLUTION POTENTIAL, AND UTILITY CORRIDORS  
 Kemmerer Resource Management Plan





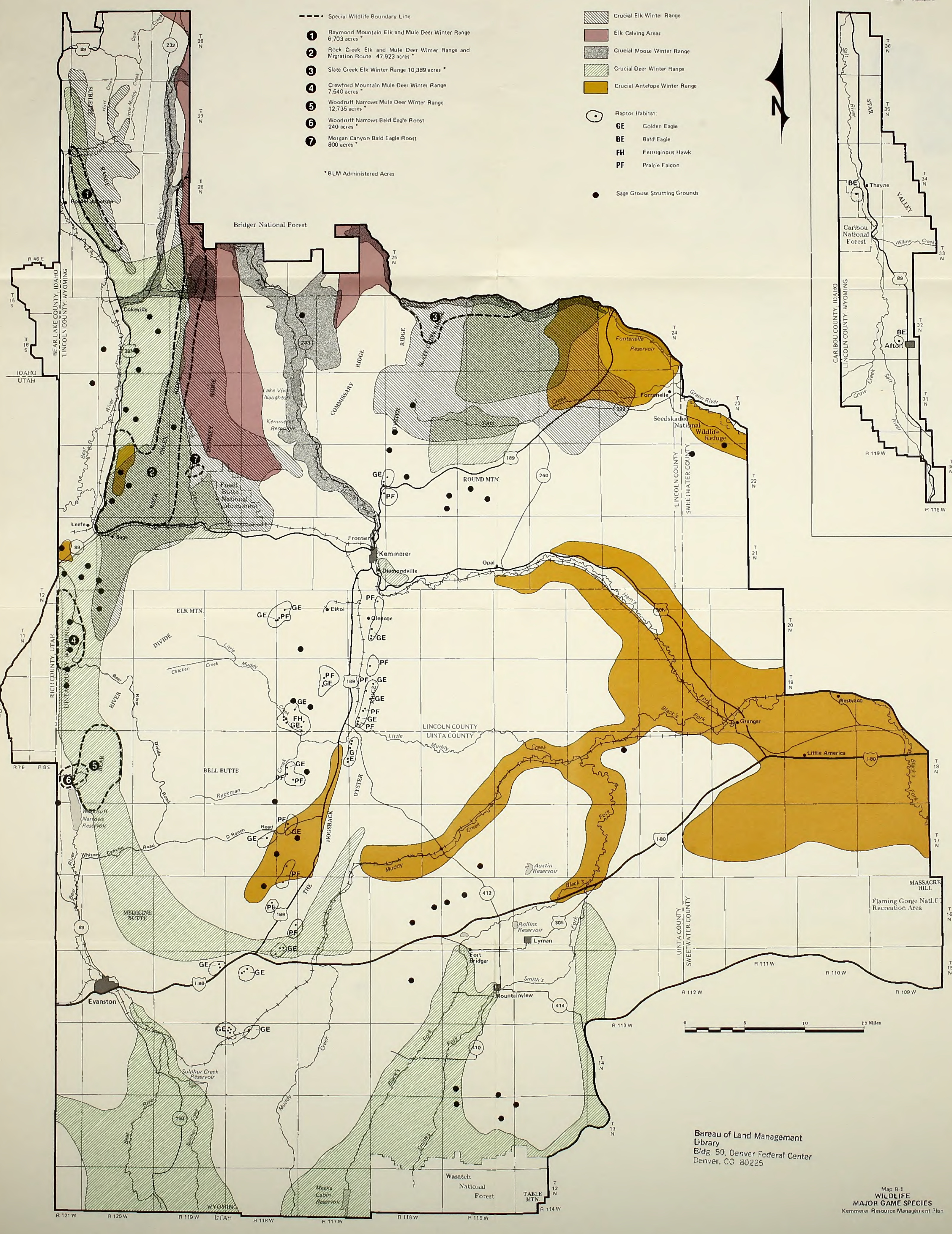
- Special Wildlife Boundary Line
- ① Raymond Mountain Elk and Mule Deer Winter Range 6,703 acres \*
- ② Rock Creek Elk and Mule Deer Winter Range and Migration Route 47,923 acres \*
- ③ Slate Creek Elk Winter Range 10,389 acres \*
- ④ Crawford Mountain Mule Deer Winter Range 7,540 acres \*
- ⑤ Woodruff Narrows Mule Deer Winter Range 12,735 acres \*
- ⑥ Woodruff Narrows Bald Eagle Roost 240 acres \*
- ⑦ Morgan Canyon Bald Eagle Roost 800 acres \*

\* BLM Administered Acres

- Crucial Elk Winter Range
- Elk Calving Areas
- Crucial Moose Winter Range
- Crucial Deer Winter Range
- Crucial Antelope Winter Range

- Raptor Habitat:
- GE Golden Eagle
- BE Bald Eagle
- FH Ferruginous Hawk
- PF Prairie Falcon

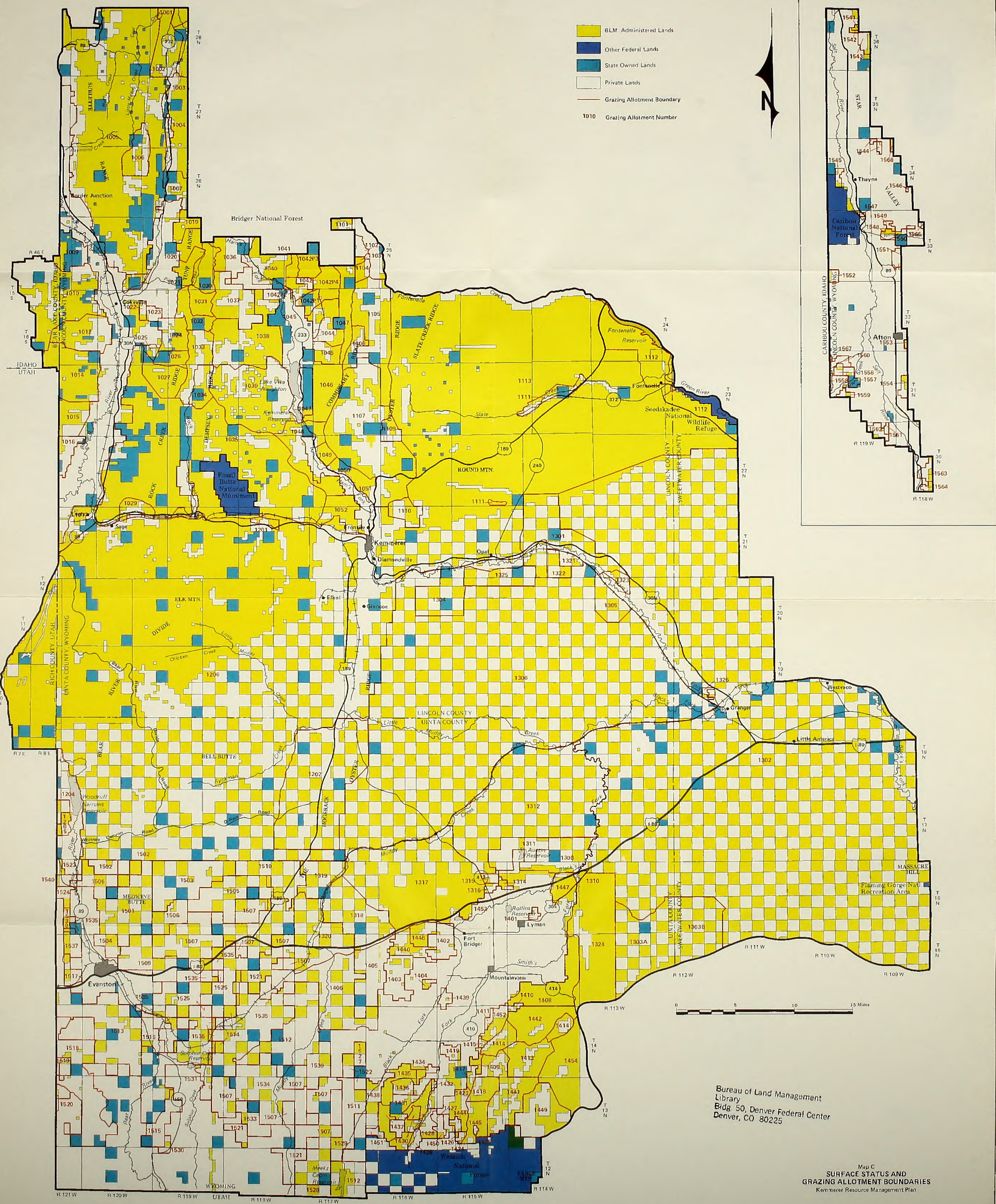
● Sage Grouse Strutting Grounds



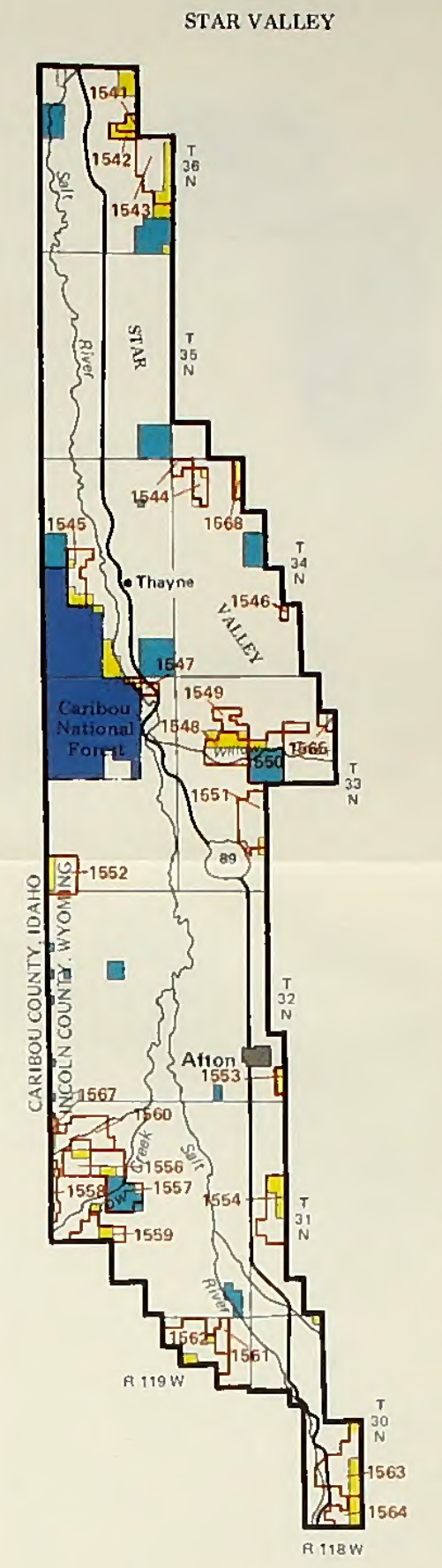
Bureau of Land Management  
Library  
Bldg. 50, Denver Federal Center  
Denver, CO 80225

Map B-1  
WILDLIFE  
MAJOR GAME SPECIES  
Kemmerer Resource Management Plan





- BLM Administered Lands
- Other Federal Lands
- State Owned Lands
- Private Lands
- Grazing Allotment Boundary
- 1010 Grazing Allotment Number

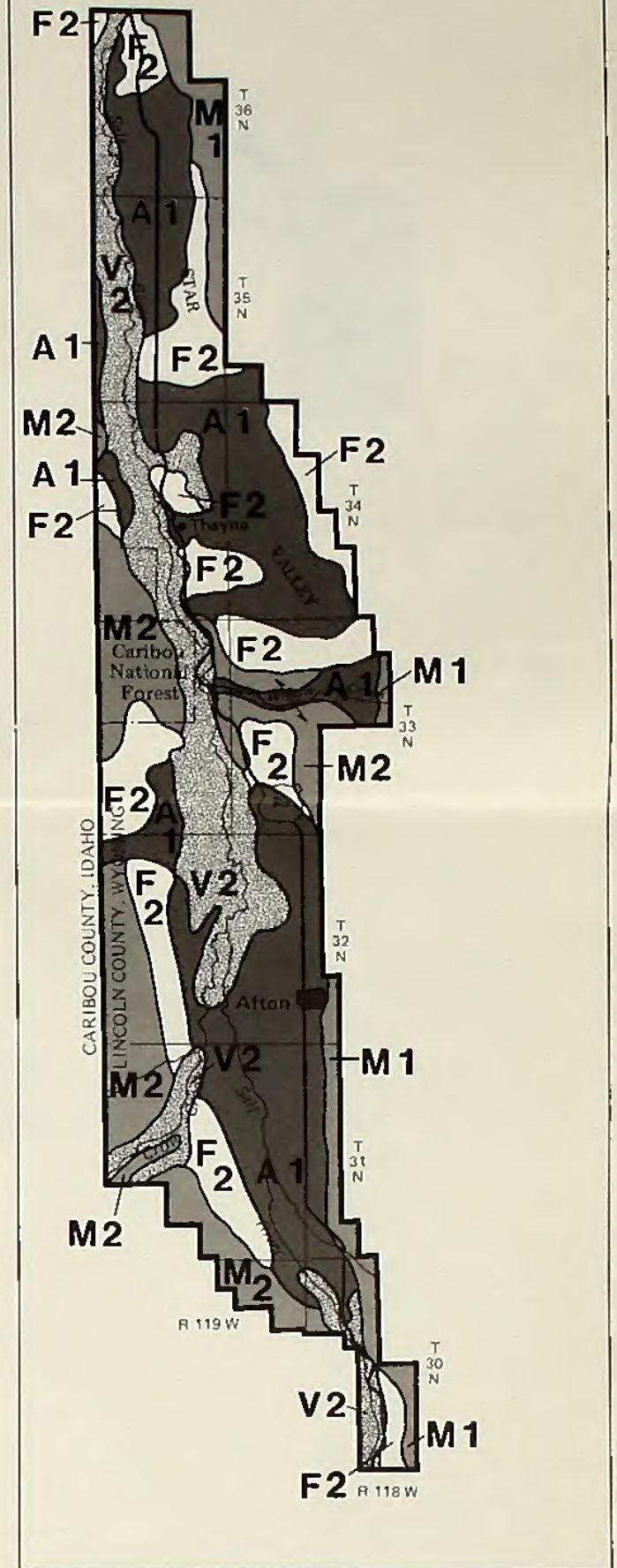
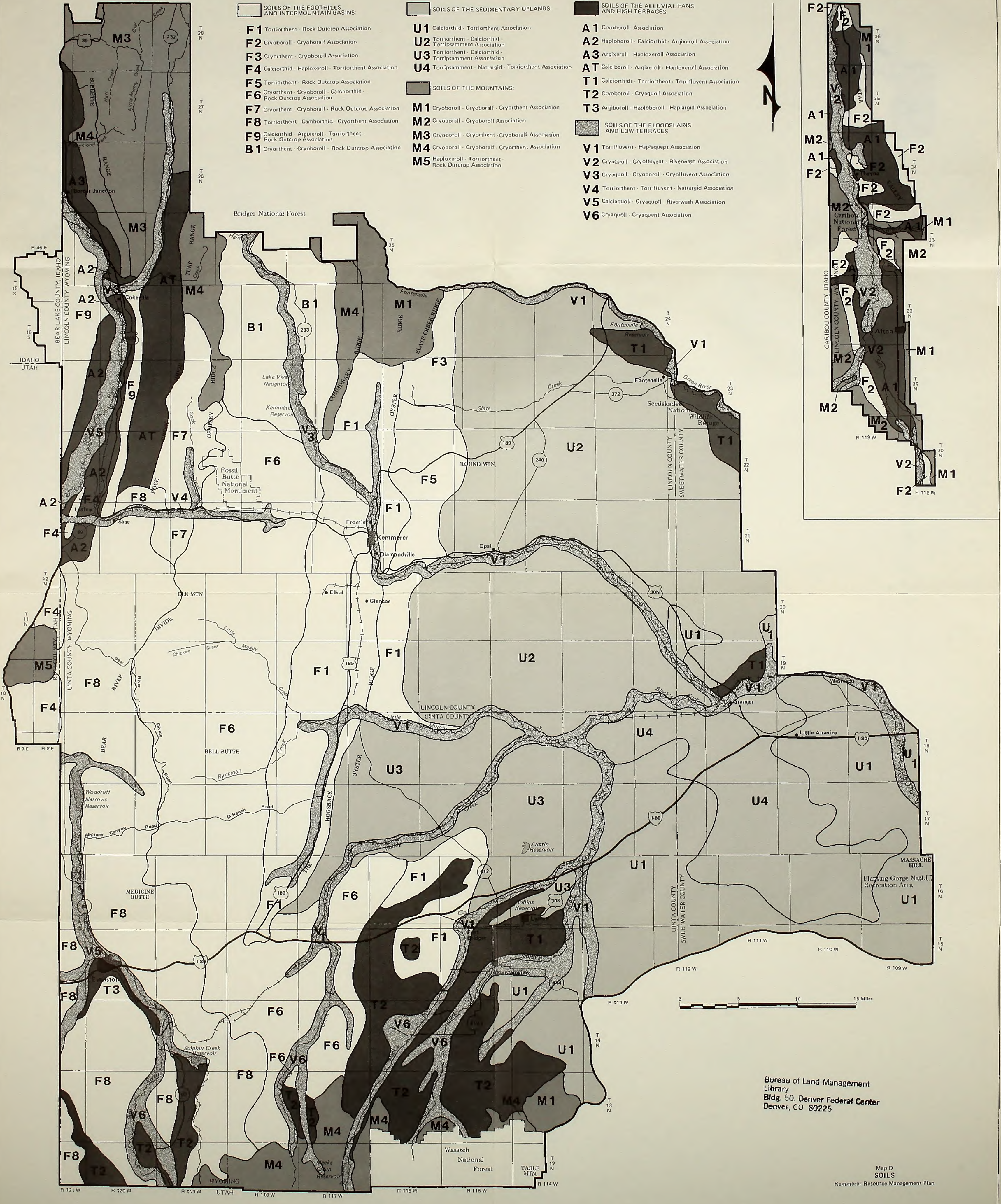


Bureau of Land Management  
 Library  
 Bldg 50, Denver Federal Center  
 Denver, CO 80225

Map C  
 SURFACE STATUS AND  
 GRAZING ALLOTMENT BOUNDARIES  
 Kemmerer Resource Management Plan



- SOILS OF THE FOOTHILLS AND INTERMOUNTAIN BASINS:**
  - F1 Torriorthent - Rock Outcrop Association
  - F2 Cryoboroll - Cryoboralf Association
  - F3 Cryorthent - Cryoboroll Association
  - F4 Calciorthid - Haploxeroll - Torriorthent Association
  - F5 Torriorthent - Rock Outcrop Association
  - F6 Cryorthent - Cryoboroll - Camborthid - Rock Outcrop Association
  - F7 Cryorthent - Cryoboroll - Rock Outcrop Association
  - F8 Torriorthent - Camborthid - Cryorthent Association
  - F9 Calciorthid - Argixeroll - Torriorthent - Rock Outcrop Association
  - B1 Cryorthent - Cryoboroll - Rock Outcrop Association
- SOILS OF THE SEDIMENTARY UPLANDS:**
  - U1 Calciorthid - Torriorthent Association
  - U2 Torriorthent - Calciorthid - Torrripsamment Association
  - U3 Torriorthent - Calciorthid - Torrripsamment Association
  - U4 Torrripsamment - Natrigid - Torriorthent Association
- SOILS OF THE MOUNTAINS:**
  - M1 Cryoboroll - Cryoboralf - Cryorthent Association
  - M2 Cryoboralf - Cryoboroll Association
  - M3 Cryoboroll - Cryorthent - Cryoboralf Association
  - M4 Cryoboroll - Cryoboralf - Cryorthent Association
  - M5 Haploxeroll - Torriorthent - Rock Outcrop Association
- SOILS OF THE ALLUVIAL FANS AND HIGH TERRACES:**
  - A1 Cryoboroll Association
  - A2 Haploboroll - Calciorthid - Argixeroll Association
  - A3 Argixeroll - Haploxeroll Association
  - AT Calciboroll - Argixeroll - Haploxeroll Association
  - T1 Calciorthids - Torriorthent - Torrifuvent Association
  - T2 Cryoboroll - Cryaquoll Association
  - T3 Argiboroll - Haploboroll - Haplargid Association
- SOILS OF THE FLOODPLAINS AND LOW TERRACES:**
  - V1 Torrifuvent - Haplaquept Association
  - V2 Cryaquoll - Cryofluvent - Riverwash Association
  - V3 Cryaquoll - Cryoboroll - Cryofluvent Association
  - V4 Torriorthent - Torrifuvent - Natrigid Association
  - V5 Calciaquoll - Cryaquoll - Riverwash Association
  - V6 Cryaquoll - Cryaquept Association

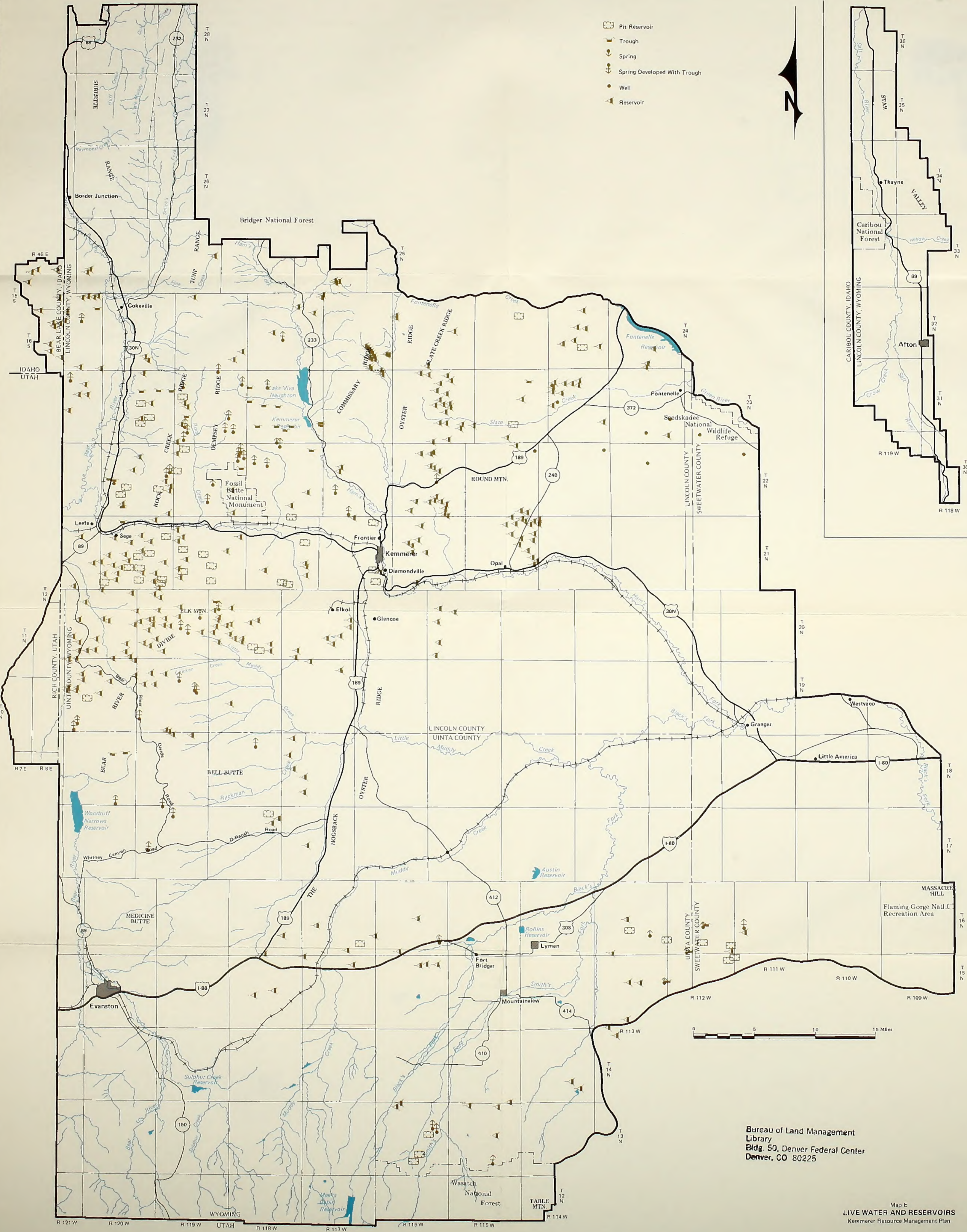
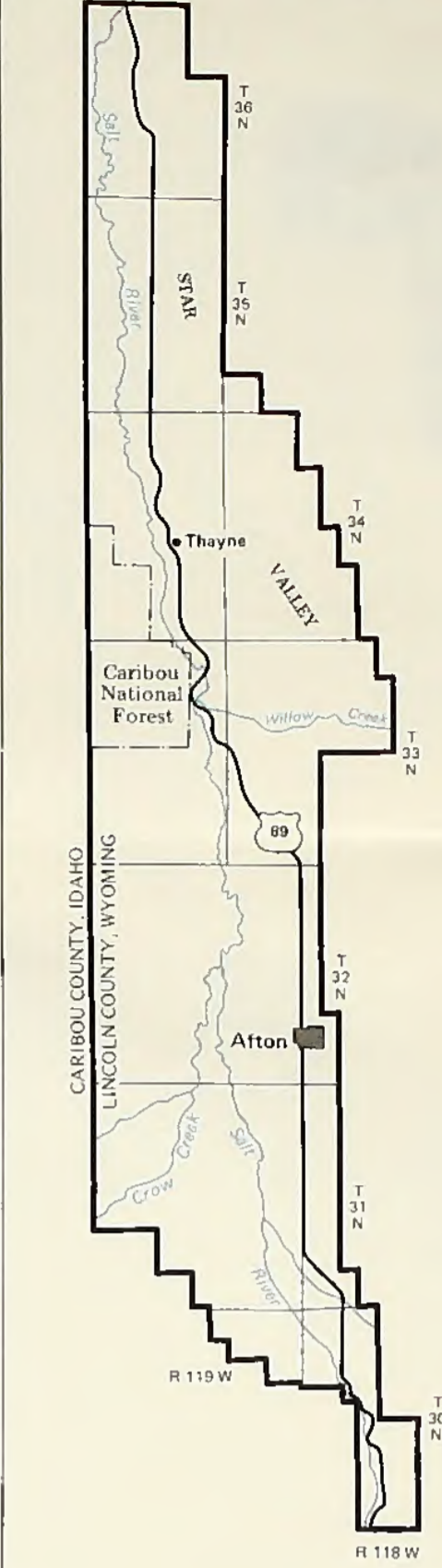


Bureau of Land Management  
Library  
Bldg. 50, Denver Federal Center  
Denver, CO 80225

Map D  
SOILS  
Kemmerer Resource Management Plan



- Pit Reservoir
- Trough
- Spring
- Spring Developed With Trough
- Well
- Reservoir



Bureau of Land Management  
 Library  
 Bldg. 50, Denver Federal Center  
 Denver, CO 80225

Map E  
**LIVE WATER AND RESERVOIRS**  
 Kemmerer Resource Management Plan

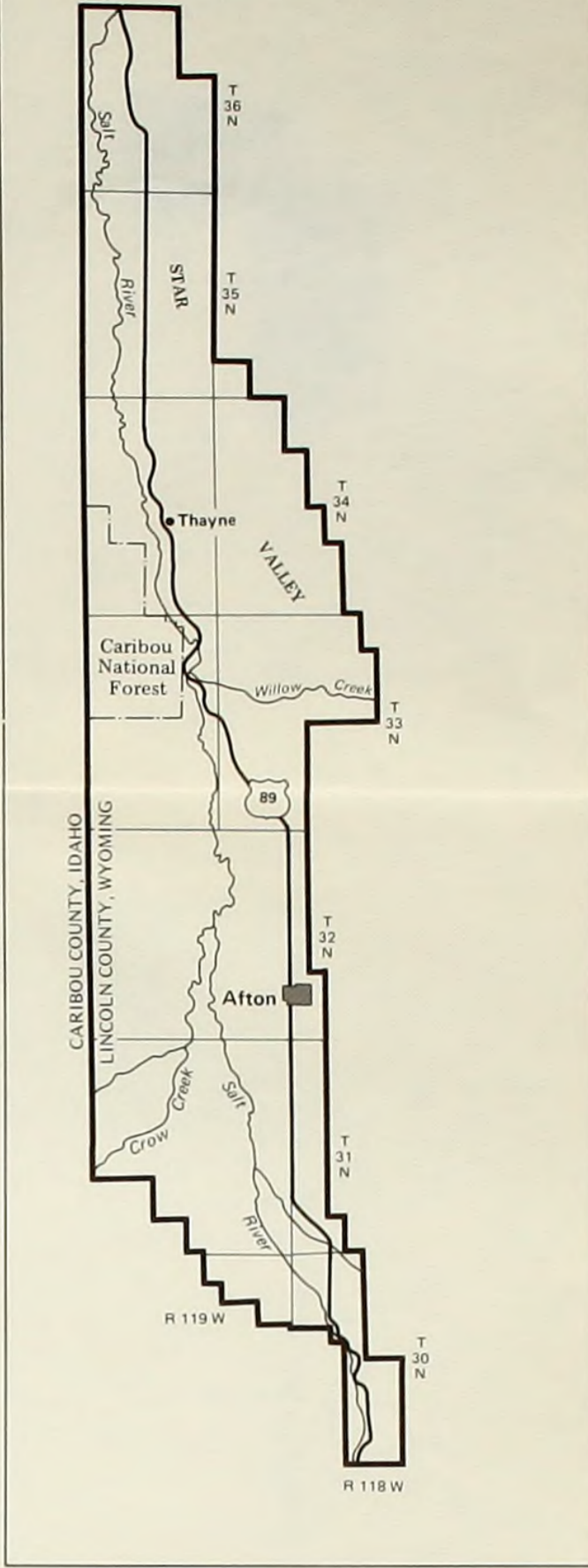




- |  |   |
|--|---|
|  Water                       |  Low Density Shrub   |
|  Cottonwood/Willow           |  Grassland/Shrubland |
|  Barren/Cultural Disturbance |  Sagebrush           |
|  Cropland/Riparian           |  Sagebrush/Juniper   |
|  Mountain Shrub              |  Juniper             |
|  Aspen                       |  Coniferous Forest   |
|  Saltbush/Greasewood         |   |



STAR VALLEY



Bureau of Land Management  
 Library  
 Bldg. 50, Denver Federal Center  
 Denver, CO 80225

Map F  
 VEGETATION  
 Kemmerer Resource Management Plan

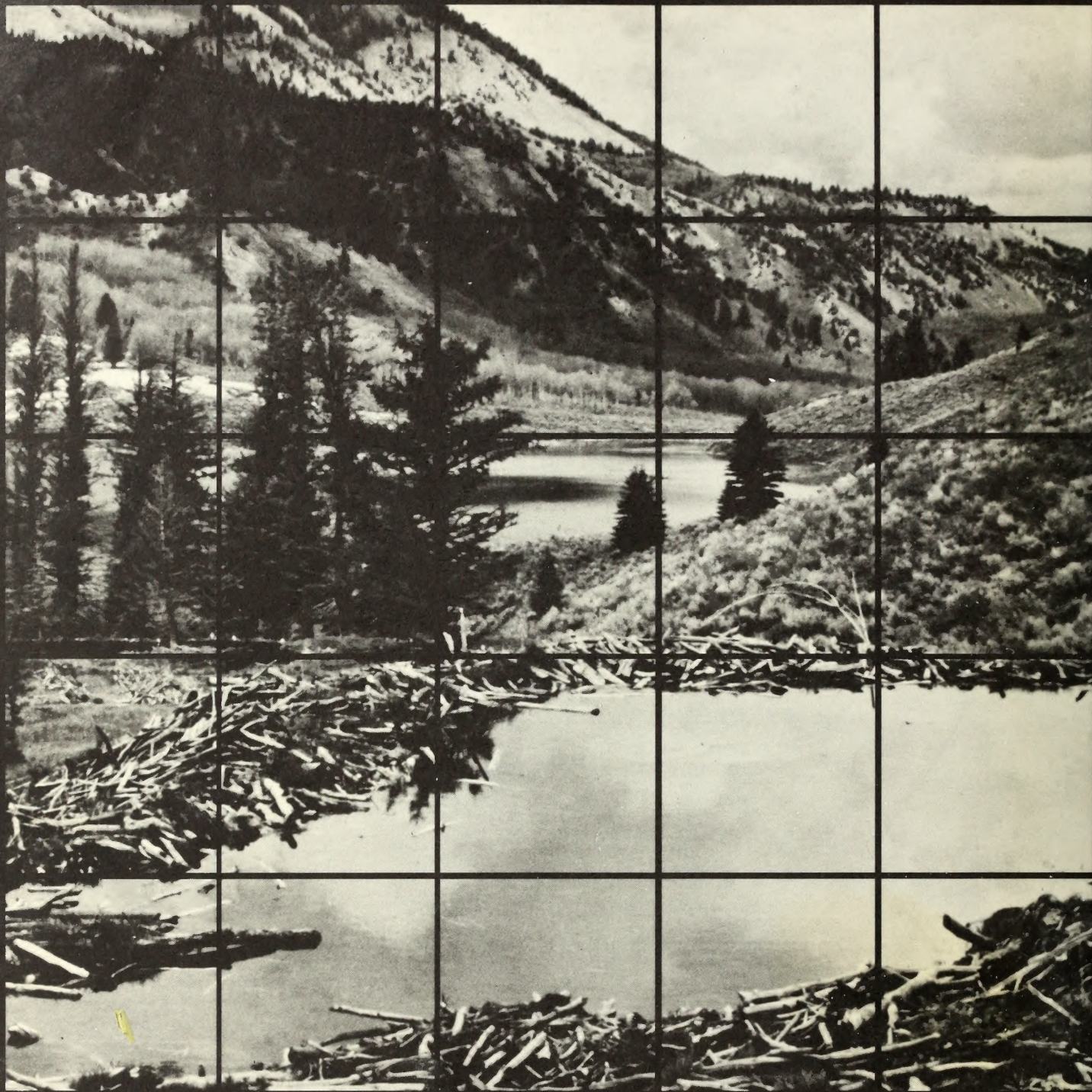












**U.S. Department of the Interior  
Bureau of Land Management  
Kemmerer Resource Area, Wyoming**

**February 1985**